

CRYPTOCURRENCY CHECKERBOARD CHARTS

Performance at a glance.



2011-2023

CRYPTOCURRENCY CHECKERBOARD CHART

2023

January	February	March	April	May	June	July	August	September	October	November	December
ADA 58.9%	VET 22.0%	XRP 42.7%	ETH 3.4%	XRP 9.6%	XLM 19.7%	XRP 47.2%	BTC -11.2%	LINK 39.3%	LINK 38.5%	ADA 28.4%	VET 64.7%
VET 47.0%	LINK 3.7%	XLM 28.8%	XLM 3.0%	LTC 2.1%	LTC 19.2%	XLM 35.9%	ETH -11.3%	VET 4.9%	BTC 28.4%	LINK 27.0%	ADA 57.7%
DOT 45.3%	ETH 1.4%	BTC 23.2%	ADA -0.4%	ETH -0.7%	BTC 12.0%	LINK 19.6%	VET -13.2%	BTC 3.9%	XRP 16.3%	DOT 22.9%	DOT 49.7%
BTC 40.0%	DOT 1.4%	ETH 13.5%	VET -1.1%	XLM -2.4%	ETH 3.3%	ADA 7.0%	DOT -16.5%	LTC 3.4%	ADA 15.2%	VET 14.1%	BTC 11.9%
LTC 34.6%	BTC 0.1%	ADA 13.5%	LTC -1.2%	ADA -6.0%	DOT -2.6%	VET -0.9%	ADA -17.0%	ETH 1.5%	VET 11.6%	ETH 13.1%	ETH 11.1%
ETH 32.6%	LTC -0.4%	LINK 5.6%	DOT -6.8%	BTC -7.3%	LINK -2.6%	DOT -1.2%	LINK -22.2%	XRP 0.9%	ETH 8.5%	BTC 8.9%	XLM 8.8%
XLM 27.6%	XLM -4.0%	DOT -0.1%	LINK -7.2%	VET -7.8%	XRP -8.4%	ETH -4.1%	XLM -23.6%	ADA -0.4%	DOT 8.3%	XRP 1.1%	LTC 4.7%
LINK 24.9%	XRP -7.0%	LTC -4.3%	XRP -12.2%	LINK -8.2%	VET -9.7%	BTC -4.1%	XRP -26.9%	XLM -2.3%	XLM 7.8%	LTC 0.8%	LINK 3.8%
XRP 19.7%	ADA -9.9%	VET -18.5%	XLM -15.4%	DOT -10.1%	ADA -23.3%	LTC -14.6%	LTC -30.7%	DOT -3.8%	LTC 4.2%	XLM -2.4%	XRP 1.2%

CRYPTOCURRENCY CHECKERBOARD CHART

2022

January	February	March	April	May	June	July	August	September	October	November	December
LINK -12.3%	XRP 26.6%	VET 84.8%	ETH -16.8%	XLM -10.9%	LINK -19.4%	ETH 61.6%	ETH -7.8%	XRP 46.5%	ETH 18.4%	LTC 44.0%	BTC -3.8%
BTC -17.0%	BTC 12.3%	ADA 19.6%	BTC -17.2%	BTC -15.6%	XRP -22.5%	DOT 25.9%	LTC -10.3%	LINK 14.6%	BTC 5.4%	LINK -2.0%	ETH -7.9%
ADA -19.8%	ETH 8.5%	XLM 16.4%	LTC -22.5%	ADA -16.3%	LTC -23.4%	LINK 24.4%	VET -11.1%	XLM 9.8%	DOT 5.1%	XRP -11.9%	LTC -11.8%
LTC -25.2%	LTC 3.4%	DOT 13.0%	XLM -26.1%	XRP -27.7%	XLM -26.7%	BTC 20.8%	XLM -11.4%	LTC -0.6%	LINK 3.5%	BTC -16.2%	VET -15.4%
XLM -25.3%	XLM -1.8%	ETH 12.6%	XRP -28.3%	DOT -28.0%	ADA -28.3%	VET 20.5%	LINK -13.6%	ADA -2.8%	LTC 3.1%	ETH -17.4%	XRP -17.1%
XRP -25.6%	DOT -2.6%	LINK 12.1%	DOT -32.1%	LTC -28.4%	VET -30.9%	XRP 16.0%	ADA -13.6%	BTC -2.9%	VET 0.4%	DOT -17.4%	XLM -21.0%
ETH -27.1%	ADA -9.0%	LTC 9.2%	ADA -34.2%	ETH -28.7%	DOT -34.0%	ADA 14.4%	XRP -14.0%	VET -3.5%	XLM -2.7%	XLM -19.2%	DOT -21.3%
DOT -27.5%	LINK -12.3%	BTC 5.5%	LINK -35.3%	LINK -30.2%	BTC -39.3%	LTC 14.0%	BTC -14.3%	DOT -10.0%	XRP -3.2%	VET -21.2%	ADA -23.0%
VET -37.8%	VET -13.5%	XRP 4.3%	VET -42.5%	VET -32.3%	ETH -46.5%	XLM 6.4%	DOT -19.1%	ETH -14.5%	ADA -6.4%	ADA -21.4%	LINK -27.7%

CRYPTOCURRENCY CHECKERBOARD CHART

2021

January	February	March	April	May	June	July	August	September	October	November	December
XLM 139.1%	ADA 278.5%	VET 125.8%	XRP 179.0%	ADA 29.0%	BTC -6.0%	BTC 19.2%	ADA 109.2%	BTC -7.3%	DOT 50.4%	LTC 8.5%	ADA -15.8%
XRP 123.0%	DOT 110.0%	XRP 36.4%	VET 115.4%	ETH -2.6%	ETH -15.8%	LINK 17.7%	DOT 85.1%	DOT -8.9%	ETH 43.1%	ETH 8.2%	XRP -17.0%
LINK 101.0%	VET 55.9%	ETH 34.5%	ETH 44.5%	LINK -16.1%	VET -17.4%	ETH 12.0%	XRP 57.7%	LINK -10.7%	BTC 40.3%	BTC -7.1%	BTC -18.8%
ADA 91.0%	BTC 36.8%	BTC 29.6%	LTC 38.0%	XLM -24.1%	ADA -20.7%	XRP 7.6%	VET 39.7%	LTC -10.9%	VET 39.8%	XLM -9.6%	ETH -20.6%
DOT 73.8%	XLM 33.3%	LTC 18.7%	LINK 30.7%	LTC -31.0%	LTC -23.1%	DOT 3.7%	ETH 34.9%	ETH -12.5%	XLM 34.2%	VET -10.1%	XLM -20.6%
ETH 78.3%	LTC 27.9%	LINK 16.9%	XLM 30.5%	VET -34.4%	XLM -29.7%	XLM 1.9%	XLM 19.2%	XLM -18.8%	LINK 26.1%	XRP -10.2%	LINK -22.8%
VET 34.4%	LINK 10.0%	DOT 8.9%	ADA 13.2%	XRP -34.7%	DOT -29.9%	LTC 0.8%	LTC 18.1%	XRP -19.8%	LTC 25.6%	DOT -11.2%	LTC -29.7%
BTC 14.2%	ETH 8.2%	XLM -0.9%	DOT -1.2%	BTC -35.4%	XRP -32.7%	VET -0.3%	LINK 16.5%	ADA -24.1%	XRP 17.2%	LINK -15.4%	DOT -29.7%
LTC 4.0%	XRP -15.3%	ADA -9.2%	BTC -1.8%	DOT -36.2%	LINK -38.9%	ADA -3.8%	BTC 13.0%	VET -24.1%	ADA -6.8%	ADA -20.9%	VET -30.4%

CRYPTOCURRENCY CHECKERBOARD CHART

2020

January	February	March	April	May	June	July	August	September	October	November	December
LTC 65.3%	LINK 46.1%	XRP -24.4%	XLM 66.7%	ADA 53.5%	VET 40.8%	VET 95.4%	LINK 103.1%	LINK 37.6%	BTC 28.2%	XLM 160.7%	BTC 47.6%
ADA 65.1%	ETH 22.2%	BTC -25.0%	LINK 64.5%	VET 43.3%	ADA 13.0%	LINK 70.2%	ETH 26.0%	ADA -17.4%	LTC 20.6%	XRP 128.2%	LTC 41.9%
LINK 60.3%	VET -2.1%	XLM -28.4%	ADA 57.1%	ETH 11.9%	LINK 10.8%	ADA 67.6%	XRP 8.8%	BTC -7.8%	LINK 13.9%	ADA 85.0%	ETH 20.5%
ETH 40.2%	XRP -3.3%	LTC -32.9%	ETH 55.0%	LINK 10.9%	ETH -2.5%	ETH 53.4%	BTC 3.0%	XRP -14.4%	ETH 7.4%	VET 61.6%	VET 17.5%
XLM 35.5%	XLM -5.7%	ADA -35.7%	VET 39.7%	BTC 9.0%	BTC -3.1%	XRP 48.0%	LTC 5.1%	ETH -17.5%	XLM 4.0%	ETH 58.7%	ADA 5.7%
BTC 30.6%	BTC -8.3%	ETH -39.3%	BTC 34.5%	XLM 3.0%	XLM -4.8%	XLM 44.7%	VET 0.8%	VET -22.4%	XRP -0.7%	LTC 57.5%	LINK -21.2%
XRP 24.2%	ADA -12.0%	VET -44.7%	XRP 21.5%	LTC -2.0%	LTC -9.5%	LTC 41.0%	XLM 0.5%	XLM -23.2%	ADA -8.1%	BTC 42.4%	XLM -36.7%
VET 10.3%	LTC -13.9%	LINK -45.2%	LTC 18.2%	XRP -4.7%	XRP -13.3%	BTC 24.0%	ADA -12.2%	LTC -24.3%	VET -26.8%	LINK 27.1%	XRP -66.9%

CRYPTOCURRENCY CHECKERBOARD CHART

2019

January	February	March	April	May	June	July	August	September	October	November	December
LTC 4.6%	LTC 45.9%	ADA 63.5%	BTC 28.6%	ETH 66.7%	BTC 26.7%	BTC -7.2%	BTC -4.5%	ETH 4.3%	XRP 14.9%	ADA -2.2%	BTC -5.1%
ADA -6.2%	ETH 27.4%	LTC 32.6%	LTC 21.4%	BTC 62.5%	ETH 9.4%	LTC -18.9%	XRP -19.3%	XRP -0.6%	BTC 10.5%	XLM -11.7%	LTC -13.2%
BTC -7.5%	ADA 12.2%	XLM 28.3%	ETH 13.2%	LTC 55.7%	LTC 6.9%	XRP -19.1%	ETH -21.1%	XLM -0.8%	ADA 6.4%	ETH -16.7%	XRP -14.8%
XRP -11.6%	BTC 11.2%	BTC 7.9%	XRP -0.9%	XRP 43.6%	XRP -10.0%	XLM -19.8%	ADA -25.2%	LTC -13.1%	XLM 5.5%	BTC -17.5%	ETH -15.5%
ETH -19.2%	XLM 3.9%	ETH 4.8%	ADA -1.1%	XLM 34.2%	XLM -21.9%	ETH -25.2%	XLM -25.9%	ADA -13.5%	LTC 4.3%	LTC -18.9%	ADA -19.2%
XLM -26.3%	XRP 1.7%	XRP -1.3%	XLM -7.5%	ADA 29.5%	ADA -8.4%	ADA -26.6%	LTC -34.9%	BTC -13.8%	ETH 1.6%	XRP -23.3%	XLM -21.9%

CRYPTOCURRENCY CHECKERBOARD CHART

2018

January	February	March	April	May	June	July	August	September	October	November	December
ETH 47.7%	LTC 25.8%	BTC -32.8%	ADA 122.5%	ETH -13.7%	BTC -14.8%	XLM 43.5%	BTC -9.1%	XRP 73.2%	BTC -4.5%	XRP -20.2%	ETH 17.2%
XLM 47.1%	BTC 2.6%	XLM -38.1%	XLM 105.1%	BTC -19.0%	ETH -21.5%	BTC 21.2%	XLM -19.5%	XLM 16.6%	XLM -13.5%	XLM -30.1%	ADA 5.5%
BTC -27.8%	XRP -20.3%	LTC -42.6%	ETH 69.1%	LTC -20.3%	XRP -23.7%	ADA 3.8%	LTC -21.1%	LTC -1.7%	ETH -15.2%	LTC -36.1%	XRP -3.1%
LTC -29.7%	ETH -22.3%	XRP -43.4%	XRP 65.1%	XRP -26.1%	LTC -31.6%	LTC -2.6%	XRP -22.7%	BTC -6.0%	ADA -17.7%	BTC -37.0%	LTC -5.7%
ADA -31.9%	XLM -36.8%	ADA -49.9%	BTC 33.3%	XLM -29.9%	XLM -34.7%	ETH -4.4%	ADA -28.0%	ADA -16.8%	LTC -19.0%	ETH -43.3%	BTC -7.2%
XRP -44.0%	ADA -31.9%	ETH -53.7%	LTC 27.5%	ADA -34.0%	ADA -38.5%	XRP -6.9%	ETH -34.6%	ETH -17.7%	XRP -22.6%	ADA -45.0%	XLM -30.1%

CRYPTOCURRENCY CHECKERBOARD CHART

2017

January	February	March	April	May	June	July	August	September	October	November	December
ETH 31.7%	ETH 46.2%	XRP 281.9%	XRP 150.1%	XLM 588.6%	LTC 51.8%	BTC 16.7%	ETH 93.6%	BTC -8.6%	XLM 111.7%	XLM 147.0%	XRP 735.2%
BTC 0.0%	BTC 22.7%	ETH 219.6%	LTC 123.7%	XRP 367.3%	ETH 20.8%	LTC 7.3%	LTC 73.7%	ETH -22.4%	BTC 48.3%	LTC 57.9%	XLM 392.6%
XRP -3.8%	LTC -7.0%	LTC 91.2%	XLM 113.8%	ETH 184.6%	BTC 6.7%	ETH -27.5%	BTC 65.6%	XRP -23.8%	ETH 1.0%	BTC 55.5%	LTC 161.7%
XLM -4.2%	XRP -11.9%	XLM 26.0%	ETH 60.9%	BTC 66.4%	XRP 0.0%	XRP -33.2%	XRP 58.0%	LTC -24.7%	LTC 0.3%	ETH 43.9%	ETH 69.2%
LTC -6.6%	XLM -21.8%	BTC -9.0%	BTC 27.8%	LTC 60.1%	XLM -21.7%	XLM -39.5%	XLM 38.8%	XLM -38.7%	XRP 0.1%	XRP 19.5%	BTC 39.3%

CRYPTOCURRENCY CHECKERBOARD CHART

2011-2023

2011	2012	2013	2014	2015	2016	2017	2018	2019	2020	2021	2022	2023
BTC 1336.9%	BTC 211.9%	BTC 5372.2%	BTC -57.8%	BTC 37.2%	BTC 125.6%	XRP 30281.0%	BTC -70.5%	LINK 518.9%	LINK 538.1%	ADA 622.0%	LTC -52.2%	LINK 168.5%
			LTC -88.4%	LTC 25.8%	LTC 25.4%	ETH 9034.0%	ETH -82.4%	BTC 85.9%	ETH 475.1%	ETH 398.9%	XRP -59.2%	BTC 155.5%
				XRP -75.8%	XRP 9.5%	LTC 5160.2%	XRP -82.5%	LTC 37.9%	ADA 456.0%	XRP 276.0%	BTC -64.4%	ADA 140.9%
						BTC 1247.2%	LTC -87.0%	ETH -1.7%	BTC 304.9%	DOT 188.2%	ETH -67.6%	ETH 90.7%
							ADA -94.4%	ADA -19.3%	LTC 203.6%	LINK 74.5%	LINK -71.7%	DOT 89.7%
								XRP -44.6%	XRP 14.9%	BTC 59.7%	ADA -81.3%	XRP 80.8%
										LTC 17.4%	DOT -83.9%	LTC 3.9%

CRYPTOCURRENCY ZERO-LINE PRESENTATION

2023

January	February	March	April	May	June	July	August	September	October	November	December	
ADA 58.9%									LINK 38.5%		VET 64.7%	
VET 47.0%									BTC 28.4%	ADA 28.4%	ADA 57.7%	
DOT 45.3%									XRP 16.3%	LINK 27.0%	DOT 49.7%	
BTC 40.0%		XRP 42.7%							LINK 39.3%	ADA 15.2%	DOT 22.9%	BTC 11.9%
LTC 34.6%	VET 22.0%	XLM 28.8%							VET 4.9%	VET 11.6%	VET 14.1%	ETH 11.1%
ETH 32.6%	LINK 3.7%	BTC 23.2%			XLM 19.7%	XRP 47.2%			BTC 3.9%	ETH 8.5%	ETH 13.1%	XLM 8.8%
XLM 27.6%	ETH 1.4%	ETH 13.5%			LTC 19.2%	XLM 35.9%			LTC 3.4%	DOT 8.3%	BTC 8.9%	LTC 4.7%
LINK 24.9%	DOT 1.4%	ADA 13.5%	ETH 3.4%	XRP 9.6%	BTC 12.0%	LINK 19.6%			ETH 1.5%	XLM 7.8%	XRP 1.1%	LINK 3.8%
XRP 19.7%	BTC 0.1%	LINK 5.6%	XLM 3.0%	LTC 2.1%	ETH 3.3%	ADA 7.0%			XRP 0.9%	LTC 4.2%	LTC 0.8%	XRP 1.2%
	LTC -0.4%	DOT -0.1%	ADA -0.4%	ETH -0.7%	DOT -2.6%	VET -0.9%	BTC -11.2%	ADA -0.4%			XLM -2.4%	
	XLM -4.0%	LTC -4.3%	VET -1.1%	XLM -2.4%	LINK -2.6%	DOT -1.2%	ETH -11.3%	XLM -2.3%				
	XRP -7.0%	VET -18.5%	LTC -1.2%	ADA -6.0%	XRP -8.4%	ETH -4.1%	VET -13.2%	DOT -3.8%				
	ADA -9.9%		DOT -6.8%	BTC -7.3%	VET -9.7%	BTC -4.1%	DOT -16.5%					
			LINK -7.2%	VET -7.8%	ADA -23.3%	LTC -14.6%	ADA -17.0%					
			XRP -12.2%	LINK -8.2%			LINK -22.2%					
			XLM -15.4%	DOT -10.1%			XLM -23.6%					
							XRP -26.9%					
							LTC -30.7%					

CRYPTOCURRENCY ZERO-LINE PRESENTATION

2022

January	February	March	April	May	June	July	August	September	October	November	December
						ETH 61.6%					
						DOT 25.9%					
		VET 78.0%				LINK 24.4%					
		LTC 31.1%				VET 21.4%			ETH 18.4%		
		ETH 29.6%				BTC 20.8%			BTC 5.4%		
	XRP 26.6%	ADA 17.1%				XRP 16.0%			DOT 5.1%		
	BTC 12.3%	XRP 15.7%				ADA 14.4%		XRP 46.5%	VET 3.8%		
	ETH 8.5%	XRP 15.7%				LTC 14.0%		LINK 14.6%	LINK 3.5%		
	LTC 3.4%	DOT 13.0%				XLM 6.4%		XLM 9.8%	LTC 3.1%	LTC 44.0%	
LINK -12.3%	XLM -1.8%	LINK -0.9%	ETH -3.9%	XRP -1.1%	LINK -19.4%		ETH -7.8%	LTC -0.6%	XLM -2.7%	LINK -2.0%	BTC -3.8%
BTC -17.0%	DOT -2.6%	XLM -9.6%	LTC -12.2%	XLM -6.0%	XRP -22.5%		LTC -10.3%	ADA -2.8%	XRP -3.2%	XRP -11.9%	ETH -7.9%
ADA -19.8%	VET -3.7%		XLM -14.1%	BTC -15.6%	LTC -23.4%		VET -11.2%	BTC -2.9%	ADA -6.4%	BTC -16.2%	LTC -11.8%
LTC -25.2%	ADA -9.0%		BTC -17.2%	ADA -16.3%	XLM -26.0%		XLM -11.4%	VET -4.5%		ETH -17.4%	XRP -17.1%
XLM -25.3%	LINK -12.3%		LINK -17.2%	VET -27.8%	ADA -28.3%		LINK -13.6%	DOT -10.0%		DOT -17.4%	VET -18.3%
XRP -25.6%			XRP -18.2%	DOT -28.0%	VET -31.8%		ADA -13.6%	ETH -14.5%		XLM -19.2%	XLM -21.0%
ETH -27.1%			ADA -21.7%	LTC -28.2%	DOT -34.0%		XRP -14.0%			VET -19.4%	DOT -21.3%
DOT -27.5%			DOT -32.1%	LINK -33.0%	BTC -39.3%		BTC -14.3%			ADA -21.4%	ADA -23.0%
VET -35.3%			VET -41.3%	ETH -36.0%	ETH -46.5%		DOT -19.1%				LINK -27.7%

CRYPTOCURRENCY ZERO-LINE PRESENTATION

2021

January	February	March	April	May	June	July	August	September	October	November	December
XLM 139.1%							ADA 109.2%				
XRP 123.0%	ADA 278.5%						DOT 85.1%		DOT 50.4%		
LINK 101.0%	DOT 110.0%	VET 125.8%	XRP 179.0%			BTC 19.2%	XRP 57.7%		ETH 43.1%		
ADA 91.0%	VET 55.9%	XRP 36.4%	VET 115.4%			LINK 17.7%	VET 39.7%		BTC 40.3%		
ETH 78.3%	BTC 36.8%	ETH 34.5%	ETH 44.5%			ETH 12.0%	ETH 34.9%		VET 39.8%		
DOT 73.8%	XLM 33.3%	BTC 29.6%	LTC 38.0%			XRP 7.6%	XLM 19.2%		XLM 34.2%		
VET 34.4%	LTC 27.9%	LTC 18.7%	LINK 30.7%			DOT 3.7%	LTC 18.1%		LINK 26.1%		
BTC 14.2%	LINK 10.0%	LINK 16.9%	XLM 30.5%			XLM 1.9%	LINK 16.5%		LTC 25.6%	LTC 8.5%	
LTC 4.0%	ETH 8.2%	DOT 8.9%	ADA 13.2%	ADA 29.0%		LTC 0.8%	BTC 13.0%		XRP 17.2%	ETH 8.2%	
	XRP -15.3%	XLM -0.9%	DOT -1.5%	ETH -2.6%	BTC -6.0%	VET -0.3%		BTC -7.3%	ADA -6.8%	BTC -7.1%	ADA -15.8%
		ADA -9.2%	BTC -1.8%	LINK -16.1%	ETH -15.8%	ADA -3.8%		DOT -8.9%		XLM -9.6%	XRP -17.0%
				XLM -24.1%	VET -17.4%			LINK -10.7%		VET -10.1%	BTC -18.8%
				LTC -31.0%	ADA -20.7%			LTC -10.9%		XRP -10.2%	ETH -20.6%
				VET -34.4%	LTC -23.1%			ETH -12.5%		DOT -11.2%	XLM -20.6%
				XRP -34.7%	XLM -29.7%			XLM -18.8%		LINK -15.4%	LINK -22.8%
				BTC -35.4%	DOT -29.9%			XRP -19.8%		ADA -20.9%	LTC -29.7%
				DOT -36.2%	XRP -32.7%			ADA -24.1%			DOT -29.7%
					LINK -38.9%			VET -24.1%			VET -30.4%

CRYPTOCURRENCY ZERO-LINE PRESENTATION

2020

January	February	March	April	May	June	July	August	September	October	November	December
LTC 65.3%			XLM 66.7%			VET 95.4%				XLM 160.7%	
ADA 65.1%			LINK 64.5%			LINK 70.2%	LINK 103.1%			XRP 128.2%	
LINK 60.3%			ADA 57.1%	ADA 53.5%		ADA 67.6%	ETH 26.0%		BTC 28.2%	ADA 85.0%	
ETH 40.2%			ETH 55.0%	VET 43.3%		ETH 53.4%	XRP 8.8%	BTC 28.2%	LTC 20.6%	VET 61.6%	BTC 47.6%
XLM 35.5%			VET 39.7%	ETH 11.9%		XRP 48.0%	BTC 3.0%	LTC 20.6%	LINK 13.9%	ETH 58.7%	LTC 41.9%
BTC 30.6%			BTC 34.5%	LINK 10.9%	VET 40.8%	XLM 44.7%	LTC 5.1%	LINK 13.9%	ETH 7.4%	LTC 57.5%	ETH 20.5%
XRP 24.2%	LINK 46.1%		XRP 21.5%	BTC 9.0%	ADA 13.0%	LTC 41.0%	VET 0.8%	ETH 7.4%	XLM 4.0%	BTC 42.4%	VET 17.5%
VET 10.3%	ETH 22.2%		LTC 18.2%	XLM 3.0%	LINK 10.8%	BTC 24.0%	XLM 0.5%	XLM 4.0%	XRP -0.7%	LINK 27.1%	ADA 5.7%
	VET -2.1%	XRP -24.4%		LTC -2.0%	ETH -2.5%		ADA -12.2%	XRP -0.7%	ADA -8.1%		LINK -21.2%
	XRP -3.3%	BTC -25.0%		XRP -4.7%	BTC -3.1%			ADA -8.1%	VET -26.8%		XLM -36.7%
	XLM -5.7%	XLM -28.4%			XLM -4.8%			VET -26.8%			XRP -66.9%
	BTC -8.3%	LTC -32.9%			LTC -9.5%						
	ADA -12.0%	ADA -35.7%			XRP -13.3%						
	LTC -13.9%	ETH -39.3%									
		VET -44.7%									
		LINK -45.2%									

CRYPTOCURRENCY ZERO-LINE PRESENTATION

2019

January	February	March	April	May	June	July	August	September	October	November	December
	LTC 45.9%			ETH 66.7%					XRP 14.9%		
	ETH 27.4%	ADA 63.5%		BTC 62.5%					BTC 10.5%		
	ADA 12.2%	LTC 32.6%		LTC 55.7%					ADA 6.4%		
	BTC 11.2%	XLM 28.3%	BTC 28.6%	XRP 43.6%	BTC 26.7%				XLM 5.5%		
	XLM 3.9%	BTC 7.9%	LTC 21.4%	XLM 34.2%	ETH 9.4%				LTC 4.3%		
LTC 4.6%	XRP 1.7%	ETH 4.8%	ETH 13.2%	ADA 29.5%	LTC 6.9%			ETH 4.3%	ETH 1.6%		
ADA -6.2%		XRP -1.3%	XRP -0.9%		XRP -10.0%	BTC -7.2%	BTC -4.5%	XRP -0.6%		ADA -2.2%	BTC -5.1%
BTC -7.5%			ADA -1.1%		XLM -21.9%	LTC -18.9%	XRP -19.3%	XLM -0.8%		XLM -11.7%	LTC -13.2%
XRP -11.6%			XLM -7.5%		ADA -8.4%	XRP -19.1%	ETH -21.1%	LTC -13.1%		ETH -16.7%	XRP -14.8%
ETH -19.2%						XLM -19.8%	ADA -25.2%	ADA -13.5%		BTC -17.5%	ETH -15.5%
XLM -26.3%						ETH -25.2%	XLM -25.9%	BTC -13.8%		LTC -18.9%	ADA -19.2%
						ADA -26.6%	LTC -34.9%			XRP -23.3%	XLM -21.9%

CRYPTOCURRENCY ZERO-LINE PRESENTATION

2018

January	February	March	April	May	June	July	August	September	October	November	December
			ADA 122.5%								
			XLM 105.1%								
			ETH 69.1%								
			XRP 65.1%			XLM 43.5%					
			BTC 33.3%			BTC 21.2%					
			LTC 27.5%			ADA 3.8%					
ETH 47.7%	LTC 25.8%							XRP 73.2%			ETH 17.2%
XLM 47.1%	BTC 2.6%							XLM 16.6%			ADA 5.5%
BTC -27.8%	XRP -20.3%	BTC -32.8%		ETH -13.7%	BTC -14.8%	LTC -2.6%	BTC -9.1%	LTC -1.7%	BTC -4.5%	XRP -20.2%	XRP -3.1%
LTC -29.7%	ETH -22.3%	XLM -38.1%		BTC -19.0%	ETH -21.5%	ETH -4.4%	XLM -19.5%	BTC -6.0%	XLM -13.5%	XLM -30.1%	LTC -5.7%
ADA -31.9%	XLM -36.8%	LTC -42.6%		LTC -20.3%	XRP -23.7%	XRP -6.9%	LTC -21.1%	ADA -16.8%	ETH -15.2%	LTC -36.1%	BTC -7.2%
XRP -44.0%	ADA -31.9%	XRP -43.4%		XRP -26.1%	LTC -31.6%		XRP -22.7%	ETH -17.7%	ADA -17.7%	BTC -37.0%	XLM -30.1%
		ADA -49.9%		XLM -29.9%	XLM -34.7%		ADA -28.0%		LTC -19.0%	ETH -43.3%	
		ETH -53.7%		ADA -34.0%	ADA -38.5%		ETH -34.6%		XRP -22.6%	ADA -45.0%	

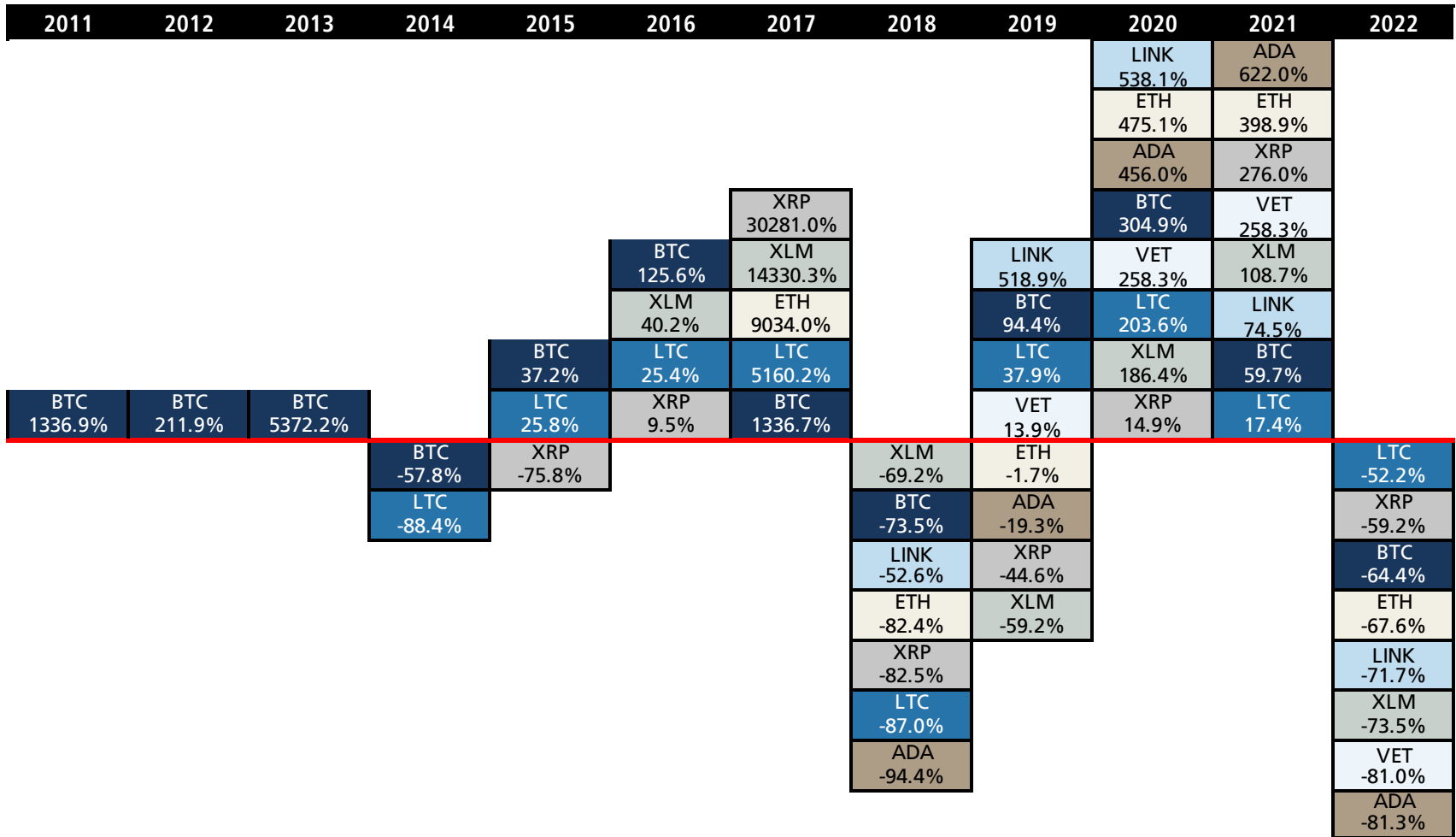
CRYPTOCURRENCY ZERO-LINE PRESENTATION

2017

January	February	March	April	May	June	July	August	September	October	November	December
			XRP 150.1%	XLM 588.6%			ETH 93.6%		XLM 111.7%	XLM 147.0%	XRP 735.2%
		XRP 281.9%	LTC 123.7%	XRP 367.3%	LTC 51.8%		LTC 73.7%		BTC 48.3%	LTC 57.9%	XLM 392.6%
		ETH 219.6%	XLM 113.8%	ETH 184.6%	ETH 20.8%		BTC 65.6%		ETH 1.0%	BTC 55.5%	LTC 161.7%
ETH 31.7%	ETH 46.2%	LTC 91.2%	ETH 60.9%	BTC 66.4%	BTC 6.7%	BTC 16.7%	XRP 58.0%		LTC 0.3%	ETH 43.9%	ETH 69.2%
BTC 0.0%	BTC 22.7%	XLM 26.0%	BTC 27.8%	LTC 60.1%	XRP 0.0%	LTC 7.3%	XLM 38.8%		XRP 0.1%	XRP 19.5%	BTC 39.3%
XRP -3.8%	LTC -7.0%	BTC -9.0%			XLM -21.7%	ETH -27.5%		BTC -8.6%			
XLM -4.2%	XRP -11.9%					XRP -33.2%		ETH -22.4%			
LTC -6.6%	XLM -21.8%					XLM -39.5%		XRP -23.8%			
								LTC -24.7%			
								XLM -38.7%			

CRYPTOCURRENCY ZERO-LINE PRESENTATION

2011-2022



BITCOIN MONTHLY RETURN HEATMAP

2015-2023

		January	February	March	April	May	June	July	August	September	October	November	December	
All Years	2023	155.5%	40.0%	0.1%	23.2%	3.0%	-7.3%	12.0%	-4.1%	-11.2%	3.9%	28.4%	8.9%	11.9%
	2022	-64.4%	-17.0%	12.3%	5.5%	-17.2%	-15.6%	-39.3%	20.8%	-14.3%	-2.9%	5.4%	-16.2%	-3.8%
	2021	59.7%	14.2%	36.8%	29.6%	-1.8%	-35.4%	-6.0%	19.2%	13.0%	-7.3%	40.3%	-7.1%	-18.8%
	2020	304.9%	30.6%	-8.3%	-25.0%	34.5%	9.0%	-3.1%	24.0%	3.0%	-7.8%	28.2%	42.4%	47.6%
	2019	94.4%	-7.5%	11.2%	7.9%	28.6%	62.5%	26.7%	-7.2%	-4.5%	-13.8%	10.5%	-17.5%	-5.1%
	2018	-73.5%	-27.8%	2.6%	-32.8%	33.3%	-19.0%	-14.8%	21.2%	-9.1%	-6.0%	-4.5%	-37.0%	-7.2%
	2017	1336.7%	0.0%	22.7%	-9.0%	27.8%	66.4%	6.7%	16.7%	65.6%	-8.6%	48.3%	55.5%	39.3%
	2016	125.5%	-14.7%	19.5%	-5.0%	8.2%	18.0%	27.0%	-7.3%	-8.4%	6.4%	14.8%	6.2%	30.6%
	2016-23	77.4%	-0.2%	11.3%	-2.9%	13.1%	4.5%	-1.2%	9.6%	2.0%	-4.7%	20.3%	0.5%	9.5%
	2010-15	427.7%	18.4%	13.6%	15.3%	44.8%	26.7%	14.4%	4.4%	-10.5%	-6.9%	22.0%	42.1%	7.6%
	All Years	172.1%	6.6%	12.2%	3.8%	24.3%	12.5%	4.5%	7.6%	-3.6%	-5.7%	21.0%	16.6%	8.7%

BITCOIN MONTHLY RETURN HEATMAP

2010-2014

		January	February	March	April	May	June	July	August	September	October	November	December
2014	-56.0%	10.1%	-31.4%	-17.4%	-1.4%	39.9%	1.8%	-8.9%	-17.8%	-18.7%	-13.4%	12.3%	-15.3%
2013	5286.0%	51.4%	62.7%	181.3%	48.2%	-8.1%	-30.0%	9.5%	31.0%	-1.8%	61.2%	450.6%	-34.8%
2012	187.3%	17.5%	-12.0%	0.35%	1.1%	4.8%	28.9%	39.5%	8.4%	22.7%	-10.1%	12.9%	7.6%
2011	1471.4%	75.0%	63.8%	-8.8%	346.1%	149.2%	85.6%	-17.4%	-38.7%	-37.3%	-36.5%	-9.2%	58.9%
2010	344.1%								-11.2%	3.2%	211.0%	8.2%	44.1%
2010-14	642.4%	36.1%	12.6%	20.8%	60.2%	35.4%	14.3%	3.6%	-8.7%	-8.7%	19.9%	47.0%	6.3%

ETHEREUM MONTHLY RETURN HEATMAP

2015-2023

		January	February	March	April	May	June	July	August	September	October	November	December
2023	90.7%	32.6%	1.4%	13.5%	3.4%	-0.7%	3.3%	-4.1%	-11.3%	1.5%	8.5%	13.1%	11.1%
2022	-67.6%	-27.1%	8.5%	12.6%	-16.8%	-28.7%	-46.5%	61.6%	-7.8%	-14.5%	18.4%	-17.4%	-7.9%
2021	398.9%	78.3%	8.2%	34.5%	44.5%	-2.6%	-15.8%	12.0%	34.9%	-12.5%	43.1%	8.2%	-20.6%
2020	475.1%	40.2%	22.2%	-39.3%	55.0%	20.4%	-9.4%	53.4%	26.0%	-17.5%	7.4%	58.7%	20.5%
2019	-1.7%	-19.2%	27.4%	4.8%	13.2%	66.7%	9.4%	-25.2%	-21.1%	4.3%	1.6%	-16.7%	-15.5%
2018	-82.4%	47.7%	-22.3%	-53.7%	69.1%	-13.7%	-21.5%	-4.4%	-34.6%	-17.7%	-15.2%	-43.3%	17.2%
2017	9034.0%	31.7%	46.2%	219.6%	60.9%	184.6%	20.8%	-27.5%	93.6%	-22.4%	1.0%	43.9%	69.2%
2016	756.4%	136.4%	182.4%	79.7%	-22.5%	59.3%	-11.3%	-4.1%	-2.8%	14.2%	-17.2%	-21.6%	-5.6%
2015	-27.4%									-45.4%	24.6%	-1.1%	7.8%
Average	155.7%	31.6%	24.9%	14.3%	21.0%	23.5%	-11.2%	3.6%	3.8%	-13.9%	6.6%	-1.8%	5.9%

ETHEREUM RELATIVE RETURN HEATMAP

2015-2023

Ethereum monthly returns relative to Bitcoin monthly returns

		January	February	March	April	May	June	July	August	September	October	November	December
2023	-25.4%	-5.3%	1.3%	-7.8%	0.4%	7.2%	-7.8%	0.1%	-0.2%	-2.3%	-15.5%	3.9%	-0.7%
2022	-9.1%	-12.2%	-3.4%	6.7%	0.5%	-15.5%	-11.9%	33.7%	7.6%	-11.9%	12.3%	-1.4%	-4.3%
2021	212.4%	56.0%	-20.9%	3.8%	47.2%	50.8%	-10.4%	-6.1%	19.4%	-5.7%	2.0%	16.4%	-2.2%
2020	42.0%	7.4%	33.2%	-19.1%	15.2%	10.4%	-6.5%	23.7%	22.3%	-10.5%	-16.2%	11.4%	-18.4%
2019	-49.5%	-12.6%	14.6%	-2.9%	-12.0%	2.6%	-13.7%	-19.4%	-17.3%	20.9%	-8.1%	1.0%	-10.9%
2018	-33.5%	104.6%	-24.3%	-31.0%	26.8%	6.5%	-7.9%	-21.1%	-28.1%	-12.5%	-11.2%	-10.0%	26.3%
2017	535.7%	31.8%	19.2%	251.1%	26.0%	71.0%	13.3%	-37.9%	16.9%	-15.1%	-31.9%	-7.5%	21.5%
2016	279.8%	177.2%	136.3%	89.1%	-28.4%	35.0%	-30.2%	3.5%	6.1%	7.4%	-27.9%	-26.2%	-27.7%
2015	-41.5%								-1.9%	-42.7%	3.6%	-1.5%	2.0%
Average	44.1%	31.8%	12.2%	17.7%	7.0%	18.2%	-10.1%	-5.5%	1.4%	-9.6%	-11.4%	-2.3%	-2.9%

XRP MONTHLY RETURN HEATMAP

2014-2023

		January	February	March	April	May	June	July	August	September	October	November	December
2023	80.8%	19.7%	-7.0%	42.7%	-12.2%	9.6%	-8.4%	47.2%	-26.9%	0.9%	16.3%	1.1%	1.2%
2022	-59.2%	-25.6%	26.6%	4.3%	-28.3%	-27.7%	-22.5%	16.0%	-14.0%	46.5%	-3.2%	-11.9%	-17.1%
2021	276.0%	123.0%	-15.3%	36.4%	179.0%	-34.7%	-32.7%	7.6%	57.7%	-19.8%	17.2%	-10.2%	-17.0%
2020	14.9%	24.2%	-3.3%	-24.4%	21.5%	-4.7%	-13.3%	48.0%	8.8%	-14.4%	-0.7%	178.2%	-66.9%
2019	-44.6%	-11.6%	1.7%	-1.3%	-0.9%	43.6%	-10.0%	-19.1%	-19.3%	-0.6%	14.9%	-23.3%	-14.8%
2018	-82.5%	-44.0%	-20.3%	-43.4%	65.1%	-26.1%	-23.7%	-6.9%	-22.7%	73.2%	-22.6%	-20.2%	-3.1%
2017	30281.0%	-3.8%	-11.9%	281.9%	150.1%	367.3%	0.0%	-33.2%	58.0%	-23.8%	0.1%	19.5%	735.2%
2016	9.5%	6.8%	26.1%	-7.0%	-8.9%	-17.7%	18.5%	-12.0%	2.3%	44.9%	-6.7%	-16.6%	-3.0%
2015	-75.8%	-42.9%	-10.7%	-39.0%	7.2%	0.2%	29.9%	-22.9%	-6.6%	-27.1%	-17.3%	-9.2%	41.7%
2014	418.8%									-0.6%	2.2%	128.7%	123.2%
Average	44.2%	-3.7%	-2.8%	7.1%	26.9%	8.1%	-8.8%	-0.8%	0.2%	3.4%	-0.8%	10.9%	17.2%

XRP RELATIVE RETURN HEATMAP

2014-2023

XRP monthly returns relative to Bitcoin monthly returns

	January	February	March	April	May	June	July	August	September	October	November	December
2023	-14.5%	-7.1%	15.9%	-14.7%	18.2%	-18.2%	53.6%	-17.7%	-2.9%	-9.4%	-7.1%	-9.6%
2022	-46.9%	26.5%	-15.4%	-30.4%	-22.0%	-30.8%	21.1%	-3.1%	41.0%	-24.6%	-19.1%	-25.9%
2021	168.8%	-24.5%	29.3%	237.1%	-22.6%	10.8%	-10.9%	83.9%	-17.3%	11.1%	7.1%	-13.7%
2020	8.7%	-29.3%	-41.7%	23.7%	47.5%	-7.8%	24.2%	-3.7%	-7.7%	-29.2%	199.3%	-59.2%
2019	-32.3%	10.8%	31.6%	-26.3%	31.7%	-7.1%	-34.8%	-21.6%	7.7%	-10.3%	-46.1%	-42.3%
2018	-39.5%	-28.4%	-47.5%	28.4%	-54.5%	-39.8%	0.4%	-19.0%	100.9%	-30.0%	-3.3%	2.2%
2017	33.3%	-14.1%	468.6%	87.6%	476.6%	17.3%	-44.9%	73.7%	-19.0%	4.8%	89.7%	800.1%
2016	6.8%	2.8%	2.2%	-28.7%	-50.5%	11.1%	-24.6%	-38.2%	58.5%	-37.1%	-46.4%	-30.3%
2015	-33.0%	-25.2%	-35.8%	-0.9%	-15.1%	2.3%	-16.8%	2.0%	-31.5%	-28.0%	-14.5%	8.5%
2014									4.3%	-15.0%	127.7%	103.8%
Average	-7.0%	-11.6%	7.4%	13.4%	4.8%	-8.9%	-8.1%	-0.2%	7.6%	-18.1%	9.5%	6.8%

CHAINLINK MONTHLY RETURN HEATMAP

2017-2023

		January	February	March	April	May	June	July	August	September	October	November	December
2023	168.5%	24.9%	3.7%	5.6%	-7.2%	-8.2%	-2.6%	19.6%	-22.2%	39.3%	38.5%	27.0%	3.8%
2022	-71.7%	-12.3%	-12.3%	12.1%	-35.3%	-30.2%	-19.4%	24.4%	-13.6%	14.6%	3.5%	-2.0%	-27.7%
2021	74.5%	101.0%	10.0%	16.9%	30.7%	-16.1%	-38.9%	17.7%	16.5%	-10.7%	26.1%	-15.4%	-22.8%
2020	538.1%	60.3%	46.1%	-45.2%	64.5%	10.9%	10.8%	70.2%	103.1%	-37.6%	13.9%	27.1%	-21.2%
2019	518.9%	34.3%	10.2%	20.4%	-8.2%	117.0%	238.7%	-35.8%	-18.9%	-0.8%	54.8%	-17.9%	-21.5%
2018	-52.6%	2.8%	7.4%	-57.7%	93.8%	-36.5%	-34.8%	30.5%	11.9%	0.9%	54.1%	-37.5%	-10.8%
2017	34.4%										-57.0%	-11.8%	254.3%
Average	77.9%	30.2%	9.6%	-14.7%	14.9%	-3.2%	2.7%	16.5%	6.3%	-1.9%	11.3%	-6.9%	1.8%

CHAINLINK RELATIVE RETURN HEATMAP

2017-2023

		January	February	March	April	May	June	July	August	September	October	November	December
2023	5.1%	-10.8%	3.7%	-14.3%	-9.9%	-1.0%	-13.1%	24.8%	-12.4%	34.0%	7.9%	16.6%	-7.3%
2022	-20.5%	5.7%	-21.9%	6.2%	-21.9%	-17.3%	32.7%	2.9%	0.8%	18.1%	-1.9%	16.9%	-24.8%
2021	9.3%	75.9%	-19.6%	-9.8%	33.1%	29.8%	-35.0%	-1.3%	3.1%	-3.7%	-10.2%	-9.0%	-4.9%
2020	57.6%	22.8%	59.3%	-26.9%	22.3%	1.7%	14.3%	37.3%	97.2%	-32.3%	-11.1%	-10.8%	-46.6%
2019	218.4%	45.2%	-0.9%	11.6%	-28.6%	33.6%	167.3%	-30.8%	-15.1%	15.0%	40.1%	-0.6%	-17.2%
2018	79.0%	42.3%	4.7%	-37.1%	45.4%	-21.6%	-23.5%	7.7%	23.0%	7.3%	61.4%	-0.8%	-3.9%
2017	-58.1%										-71.0%	-43.3%	154.5%
Average	27.0%	27.1%	1.2%	-13.4%	2.9%	2.1%	9.8%	4.4%	11.1%	4.1%	-8.1%	-6.6%	-4.7%

Data source: Coinmetrics.io

Cane Island's Cryptocurrency Checkerboard Charts and **Zero-Line Presentations** depict annual and monthly returns for several cryptocurrencies and tokens, ranked from best to worst performance. Cane Island's **Monthly Return Heatmaps** depict returns for all monthly periods for several cryptocurrencies and tokens.

These visualizations are intended as educational aides for investors of all types. They may be used to facilitate discussions about the risks of investing in cryptocurrencies; differences and similarities among and between different currencies and tokens; determinants of long- and short-term performance; and the role cryptocurrency may play in a diversified portfolio.

ASSET DESCRIPTIONS

Digital Currency/Digital Commodity Group

BTC Bitcoin is the original peer-to-peer electronic cash system which uses a decentralized encrypted ledger. It is the single dominant cryptocurrency, with the predominant use cases being store of value and electronic payment.

LTC Litecoin is an alternative cryptocurrency modeled on bitcoin. It offers faster processing time with the tradeoff that it suffers from higher inflation rates. Its predominant use cases are speculative investment and electronic payment.

Cross-Border Payments Group

XRP Ripple is a cryptocurrency that acts as a bridge between a transaction involving two fiat currencies (or other cryptocurrencies) transacting on the Ripple network. The Ripple network purports to be considerably faster and cheaper than conventional cross-border payment networks. Its predominant use cases are as cross-border payment token and investment.

XLM Lumens is the cryptocurrency associated with nonprofit Stellar, which acts in as a bridge between a transaction involving two fiat currencies (or other cryptocurrencies) transacting on the Stellar network. Stellar's primary focus is on developing economies in the areas of remittances and bank loans to those who are still outside of the scope of the banking services. It doesn't charge individuals or institutions for using the Stellar network and has funded operations through corporate donations and ICO proceeds. Its predominant use cases are as cross-border payment token and investment.

Development Network Token Group

ETH Ether is a closed-ecosystem payment for network participants to execute their requested operations on the Ethereum network. The Ethereum network supports building and running digital, decentralized applications (dApps) for business and personal use. A developer who builds Ethereum apps may need to pay charges to host and execute the apps on the Ethereum network, and a user who uses such apps may need to pay for using the app. Ether acts as a medium to allow such payments. Its predominant use case is as an investment and network payment token.

ADA Cardano is a proof-of-stake blockchain platform. Every ADA holder also holds a stake in the Cardano network. The network supports building and running digital, decentralized applications (dApps) for business and personal use. A developer who builds apps may need to pay charges to host and execute the apps on the Cardano network, and a user who uses such apps may need to pay for using the app. ADA acts as a medium to allow such payments. Its predominant use case is as an investment and network payment token.



Bridge Token Group

LINK Chainlink is a platform that aims to build a decentralized oracle network. It also seeks to bridge the gap between real-world applications and smart contracts on the blockchain. LINK acts as a medium to allow such payments. Its predominant use case is as an investment and network payment token.

VET VeChain is software that aims to incentivize a network of computers to work with a platform that allows businesses to build and run decentralized applications. The network offers to improve supply-chain management and data transfers. VET acts as a medium to allow payments on that network. Its predominant use case is as an investment and network payment token.

DOT Polkadot (DOT) is a multi-chain application environment that enables cross-chain interoperability on a level previously not possible. Polkadot aims to enable a web where our data and applications are not siloed within individual blockchains but can be transferred across blockchains.

SELECTION CRITERIA

Assets listed are not indices. They are individual cryptocurrencies and tokens selected from proprietary criteria. Selection criteria will not be made public. However, key selection considerations include, but are not limited to:

Developed regulatory framework: The asset must be listed on a cryptocurrency exchange which is subject to regulatory oversight.

US Dollar trading pairs: Because we report performance in USD, the asset must have a direct USD trading pair. This mitigates issues associated with multiple exchange rate sources.

Size: Generally, the asset must have a stated market capitalization in excess of \$1 billion for substantially all of a calendar year, and be expected to maintain that level for the foreseeable future.

Maturity: Generally, the asset must have a five-year performance record for consideration.

Qualitative factors: Certain other factors such as governance structure and history; availability and quality of the data provided; reputation; breadth of use; availability of assets with competing use cases; and actual, intended and potential use cases may be considered in our selection of assets for reporting.

New assets are expected be added at a later date.

Information was obtained from third party sources and is believed to be reliable, but its accuracy cannot be guaranteed. With regard to the representations made in this document and these disclosures, there is no way to guarantee that they are accurate or complete. This document is for educational purposes only. It does not constitute an offer to sell, a solicitation to buy, or a recommendation for any security, cryptocurrency, token, commodity, or investment strategy. The information presented is not intended to constitute legal, tax, accounting, securities, or investment advice, nor an opinion regarding the appropriateness of any investment, to any person in any jurisdiction. No reference to any specific asset constitutes a recommendation to buy, sell or hold that asset or any other asset. Any views expressed in this document by us were prepared based upon the information available to us at the time such views were written. Changed or additional information could cause such views to change. All information is subject to possible correction and may change without notice.

Learn more at www.cane-island.digital

Copyright © 2024 Cane Island Digital Research, LLC

All rights reserved. No part of this publication may be reproduced, distributed, or transmitted in any form or by any means, including photocopying, recording, or other electronic or mechanical methods, without the prior written permission of the publisher.